

DEBORAH SWEENEY BA Hons in Fine Art Painting and Printmaking from Sheffield College of Art. Following this a Post Graduate Certificate in Education. Established The Westhorpe School of Art in Southwell in 1997. Combines



her painting with teaching adults and children. Exhibited widely, including the Royal Academy Summer Show in 2003. A painter who is obsessed with colour and light who's subject matter includes; local landscape, landscapes of Norfolk, Greece, Morocco and France. Also interiors and still-life. Style: painterly, mainly figurative. A colourist. Works in oils and acrylics. Numerous private commissions.

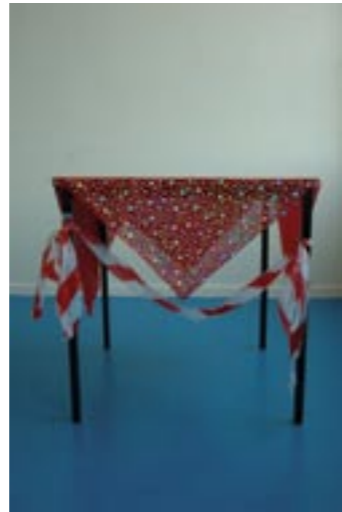
STUART BLACKWOOD graduated from Derby College of Higher Education with a Diploma in Creative Photography in 1981. He has taught photography at Derby and Nottingham Trent Universities and currently is a practising photographer, supplying commissioned work to artists, designers and architects. His personal work has been exhibited at a number of regional galleries and The Photographers Gallery, London.



DAVID WILLETS

I work from a wide range of subjects that are usually returned to each year. I do not have a specific concern within these subjects but rather a number of connections including repetition

and change, decay and renewal, past and present, reality and illusion, movement and stillness and the relationship of absence and presence in working direct or from memory.



MAGGY MILNER

graduated in 1990 from Derby University with BA (hons), lectured in Photography at local universities until 2005, has received commissions for book jackets and publications, while working locally as a social photographer. She continues to exhibit widely. She is interested in the way the banal and commonplace can become extraordinary when photographed in a certain way, the use of symbolism to convey ideas, and the blurring of boundaries between conventional "discovered" photographs and the "still life" genre which fabricates an imaginary world.

CHRISTINE MEASURES

Trained at Manchester as an illustrator. I feel that what I do is make visual recordings of a place and its people, family on holiday, and lately the everyday life of a small hill-top town in Tuscany with its medieval streets and buildings. All these are an essential part of my life. But locally my passion for the past 43 years remains Southwell Minster.



HEATHER CARTWRIGHT

gained a place in the Printmaking School at the Royal College of Art, obtaining a degree in 1966. Her work, mainly watercolour and ink drawings, is an expressive and direct response to the environment – the colour, shapes, contrasting forms and changing moods of nature. Her present involvement in printmaking is through making woodcuts.



DAVID GUY MEASURES

The Avon, a boat, and Warwick Castle Park led him to delight in the natural world which he has always drawn and kept written records. Then the Slade with its influence of Bomberg and the Abstract American painters offered the means of playing with a source image as a contrast from an accurate depiction, thereby keeping outdoor painting a means of discovery.

PETER CARTWRIGHT

Studied painting at the RCA. He taught Fine Art at Nottingham Trent University until 1996. Now painting full-time. He has exhibited consistently – work purchased by The Arts Council and East Midlands Arts. "I make unpremeditated responses through drawing, to images, often banal, to be transformed through the working process. In my painting I am preoccupied with tensions between imagery and abstraction and colour."



DEREK SPRAWSON

is a lecturer in Fine Art at Nottingham Trent University. Over the past two years he specifically made work that explored the context of locating his paintings in Southwell Minster and St. Mary's in the Lace Market, Nottingham. Future plans include making paintings to be placed along the route of a walk.



MARIANNE McPHIE "Her love of nature began as a child growing up in Africa, and she is happiest when visually explaining a natural object, like the structure and detail of a flower. She has an Art History degree and has studied under some of Britain's most respected botanical artists. Her flower prints sell worldwide and she writes on botanical art as well as tutoring botanical drawing and painting courses throughout the year in Southwell."

JILL LANGFORD

studied Fine Art at Reading University, went on to become a photographer, producing large black and white photographs of children and childhood. She returned to painting twenty five years ago, attends courses at the Slade and the Princes Drawing School. She Continues to paint 'still lives' and do portrait drawings. Over the past two years she has taken up drawing and painting landscapes.



LYNN FULTON

Studied at Bath Academy of Art and The Slade. My work is concerned with an exploration of objects both made and found, and setting up situations between them. Landscape as experienced on a road journey is a central theme, as a dislocation

affording glimpses. I use a combination of pictorial, narrative and formal elements, employing different materials and techniques. The pieces often involve construction referring to building practices and temporary structures. I am interested in still life painting and the relationship between physical and pictorial space.

NORMA BLAMEY

graduated in Art at Homerton College, Cambridge in 1955 and taught at various schools until 1986. On returning to education, Norma graduated in Fine Art in 1991 from Nottingham Trent University. She has exhibited in many group shows in London and Nottingham and now continues with her painting and drawing.



SEAN CUMMINS The subject of my work is spacial-immersion. I am interested how cinema represents states of spacial immersion. The formal outcome of my work has been video, tape-slide, text, and graphic works. These



works convey the confusions within us when, the subject projects an interior narrative onto an external space, mis-readings occur. As in a film noir, the familiar environment morphs into another space.



Artspace artists Geoff Litherland, Stuart Parkinson, Steffie Richards, Linda Robson, Georgina Bell and David Uden open their studios for the first time since moving into



Untitled 2006
Steffie Richards Oil
on linen

The aim of 'Southwell Open Studio' is to engage the public in the Visual Arts by the presentation of work with informed dialogue and discussion. To fulfill this 'Opens Studios' were held in 2004 and 'A Week in November' 2005. Once again the studios will be open but having far more work available with the introduction of new members and the inclusion of the artists working in the new 'Southwell Artspace'.

With this the artists of 'The Southwell Open Studios' look forward to welcoming everyone to visit and see varied collections of works in the locations of their making.

Artists will have work for sale

Refreshments will be available at some venues

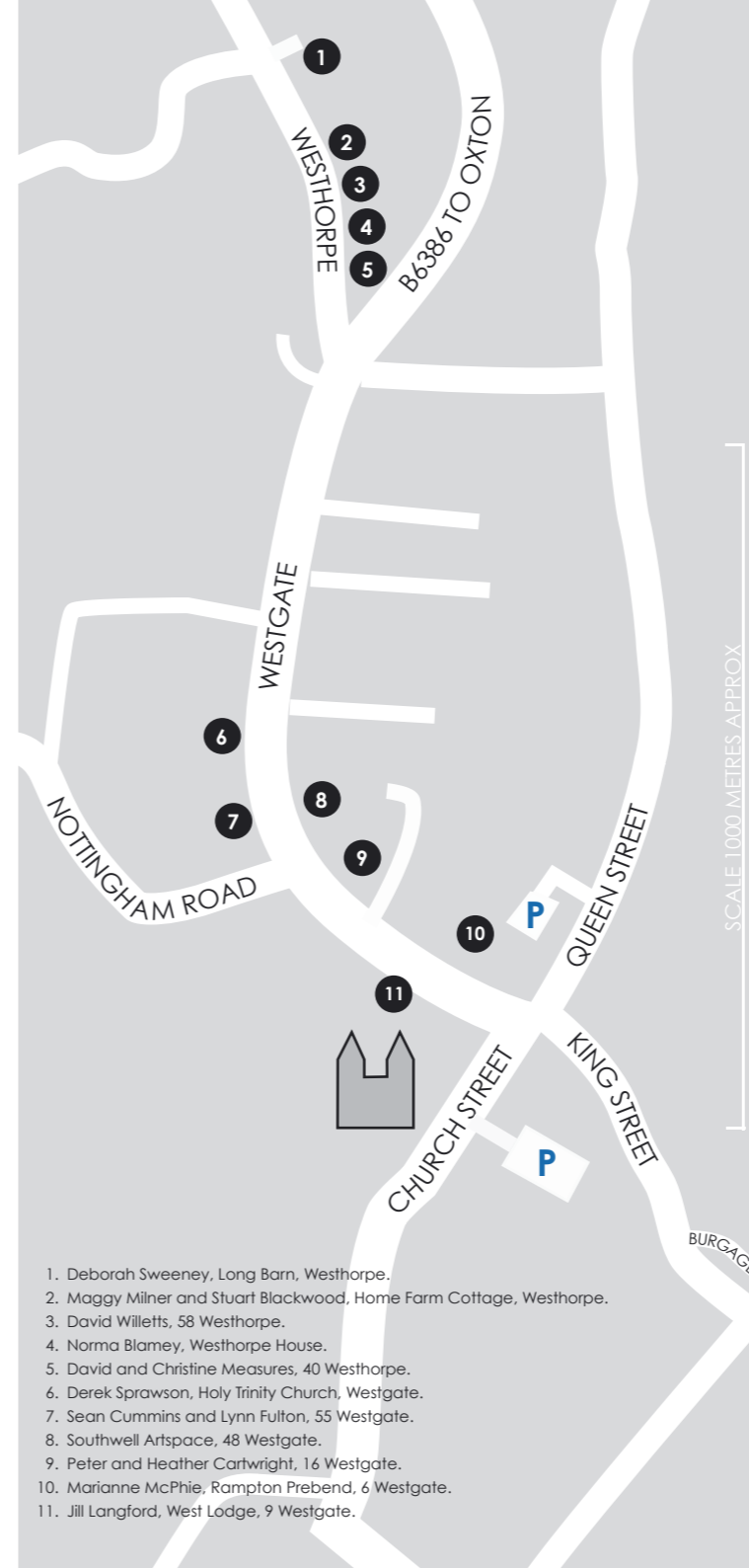
Liability: Southwell Open Studios cannot accept liability for any loss, damage or injury sustained by any member of the public visiting the studios. The public does so entirely at its own risk

Wheelchair access may be difficult in some studios

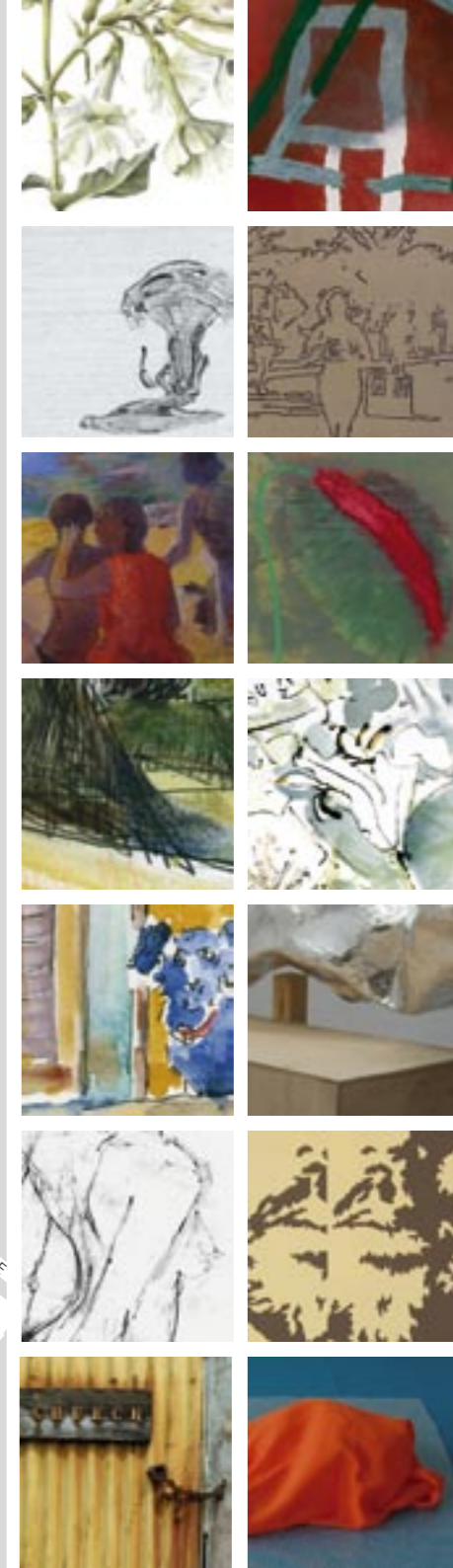
Children under 14 must be accompanied by an adult

Visit our web site for regular news updates, to view and buy work.

www.southwellartists.co.uk



1. Deborah Sweeney, Long Barn, Westhorpe.
2. Maggy Milner and Stuart Blackwood, Home Farm Cottage, Westhorpe.
3. David Willetts, 58 Westhorpe.
4. Norma Blamey, Westhorpe House.
5. David and Christine Measures, 40 Westhorpe.
6. Derek Sprawson, Holy Trinity Church, Westgate.
7. Sean Cummins and Lynn Fulton, 55 Westgate.
8. Southwell Artspace, 48 Westgate.
9. Peter and Heather Cartwright, 16 Westgate.
10. Marianne McPhie, Rampton Prebend, 6 Westgate.
11. Jill Langford, West Lodge, 9 Westgate.



SOUTHWELL OPEN STUDIOS
An opportunity to visit the studios of fourteen Southwell Artists • 4th & 5th November 2006 • 10am-5pm
Weekend ticket £3.00 www.southwellartists.co.uk